

2015



Remote Login from an Apple Device

James Stanley
Coombeshead Academy
06/05/2015



Contents

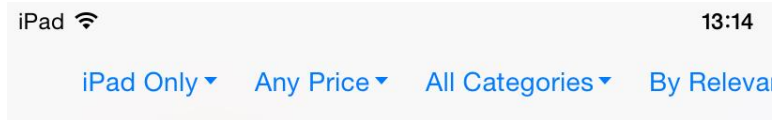
Downloading and installing the Microsoft RD app	3
Configuring the app	4
Logging in	6

Downloading and installing the Microsoft RD app

1. Open the App Store



2. Search for the Microsoft Remote Desktop app and install it.



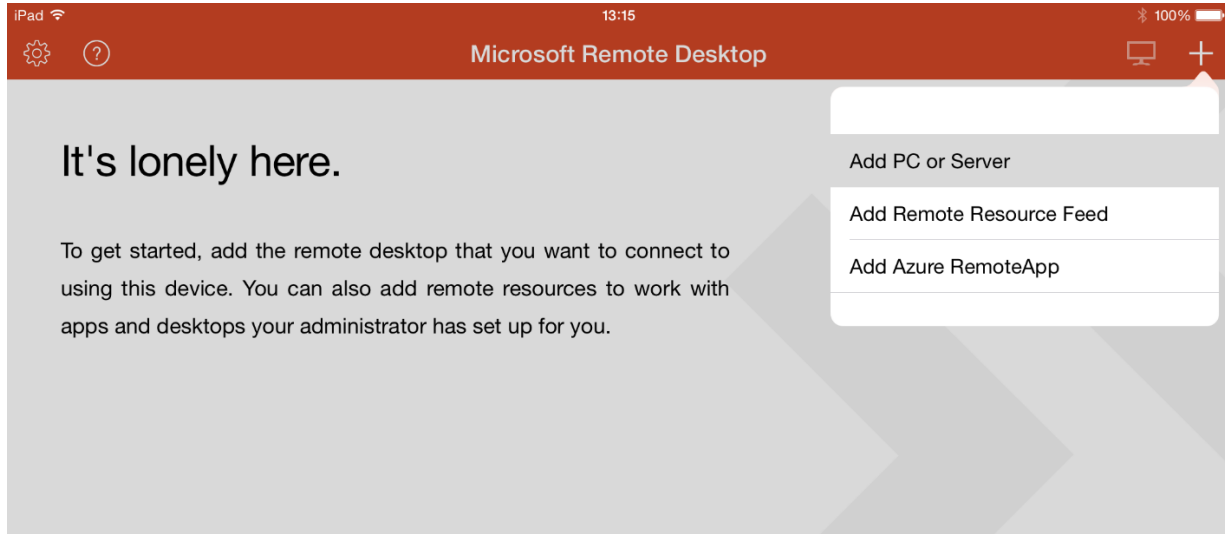
3. Once it has installed, open the app



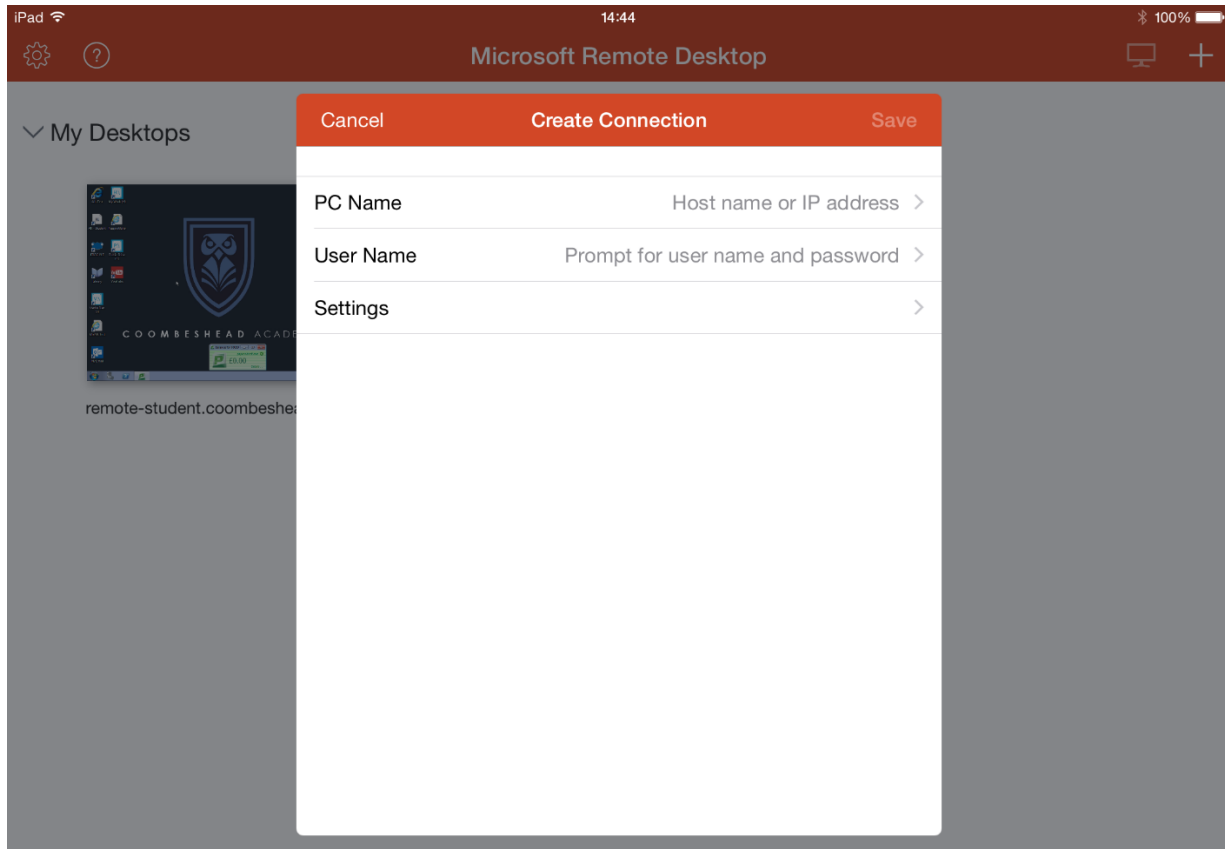
Configuring the app

The next stage is to configure the app to connect to the school servers.

1. In the top right corner of the app click the **+** sign and select **Add PC or Server**.



2. The Create Connection window will now appear.



3. In the PC Name field type **remote-staff.coombeshead.com** (if you are a member of staff) and click **Done**.

Cancel Add Remote Desktop Done

remote-staff.coombeshead.com ✕

or **remote-student.coombeshead.com** (if you are a student) and click **Done**.

Cancel Add Remote Desktop Done

remote-student.coombeshead.com ✕

4. Then click **Save** to save the connection settings.

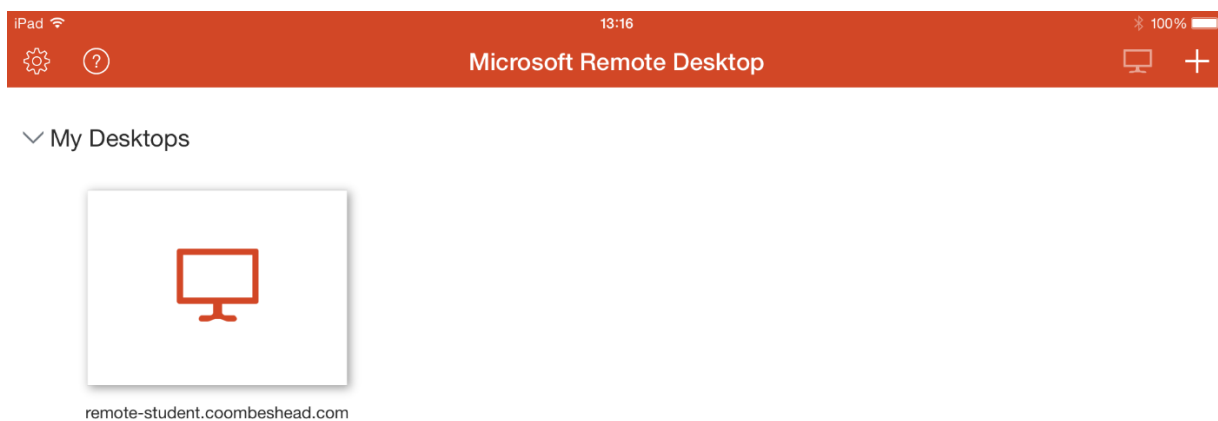
Cancel Create Connection Save

PC Name remote-student.coombeshead.com >

User Name Prompt for user name and password >

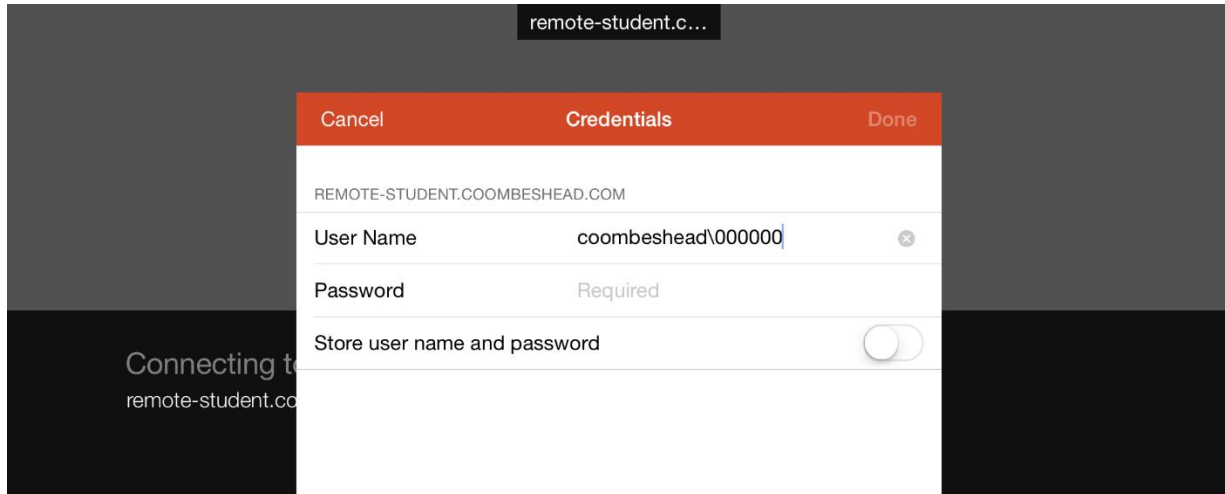
Settings >

5. The connection will now show on the main screen of the app.

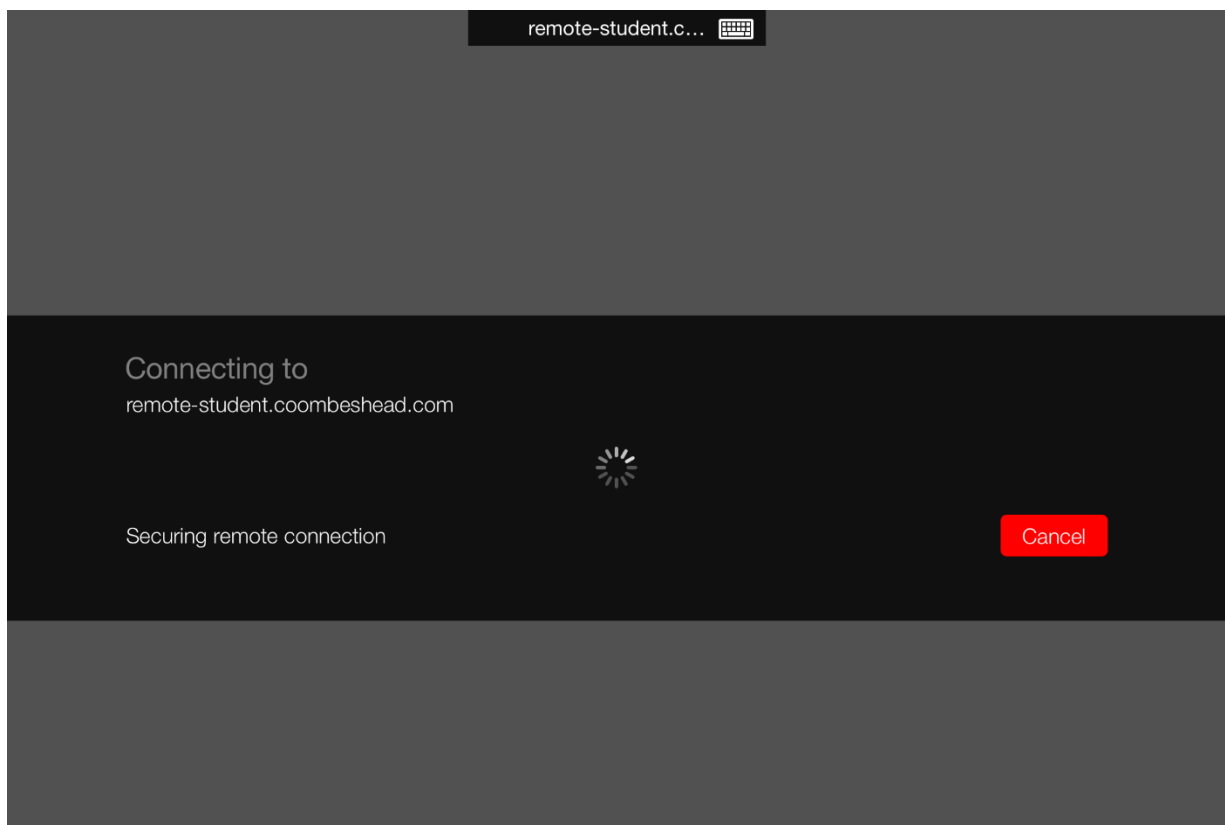


Logging in

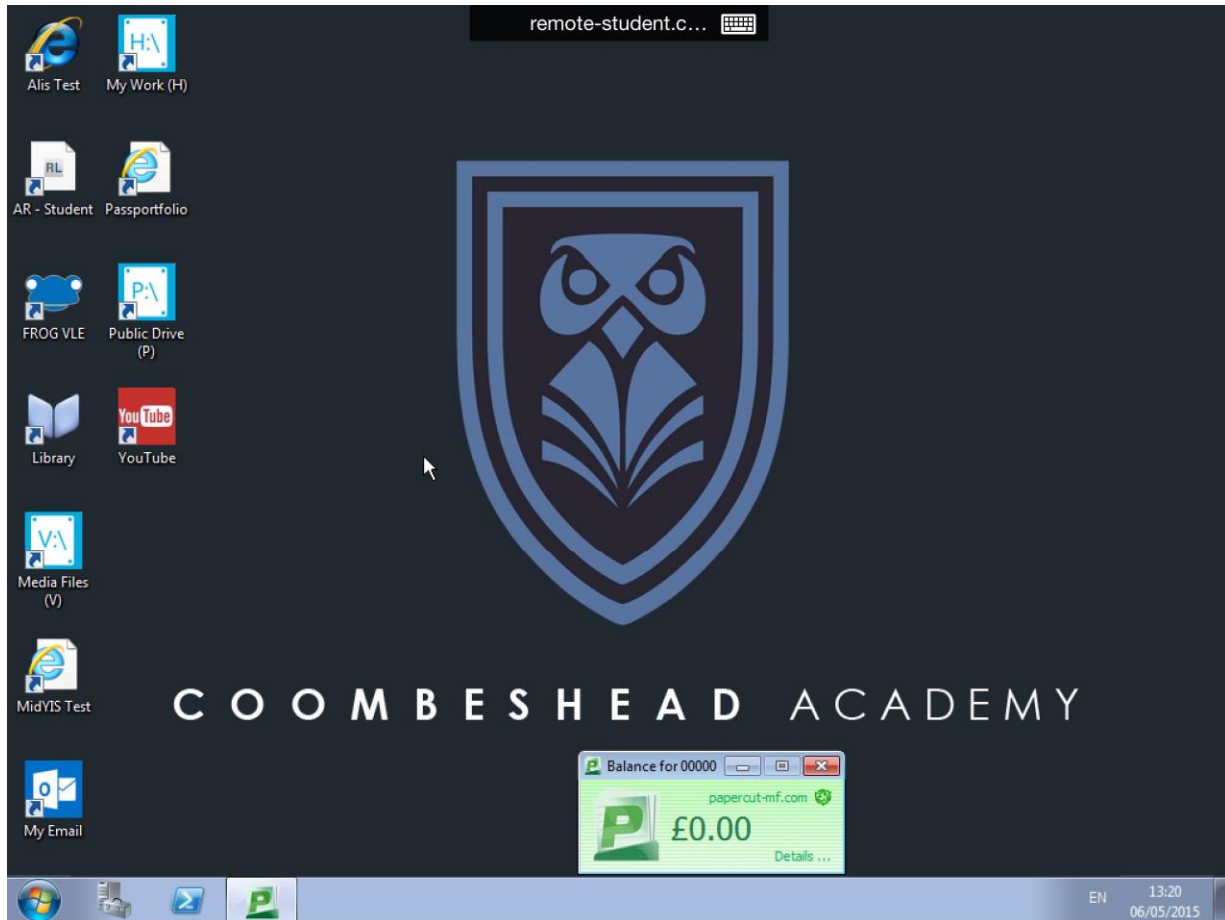
1. Click on the icon to open the connection and you will be prompted for your school username and password. You **MUST** put **coombeshead** in front of your username. Then click **Done**.



2. The app will now attempt to connect.



3. Once connected you will see the Coombeshead desktop.



Please note: If you are using a touch screen device you will need to drag the mouse around the screen.